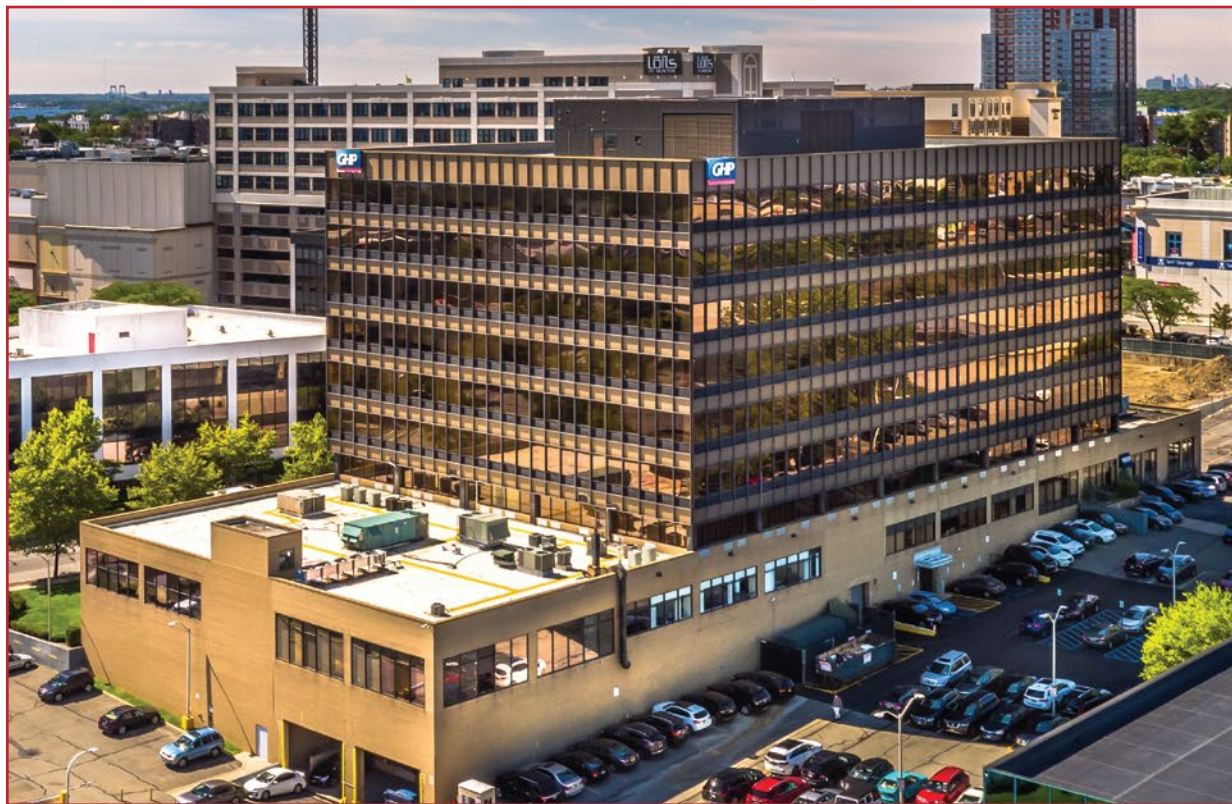


OFFICE/MEDICAL SPACE AVAILABLE

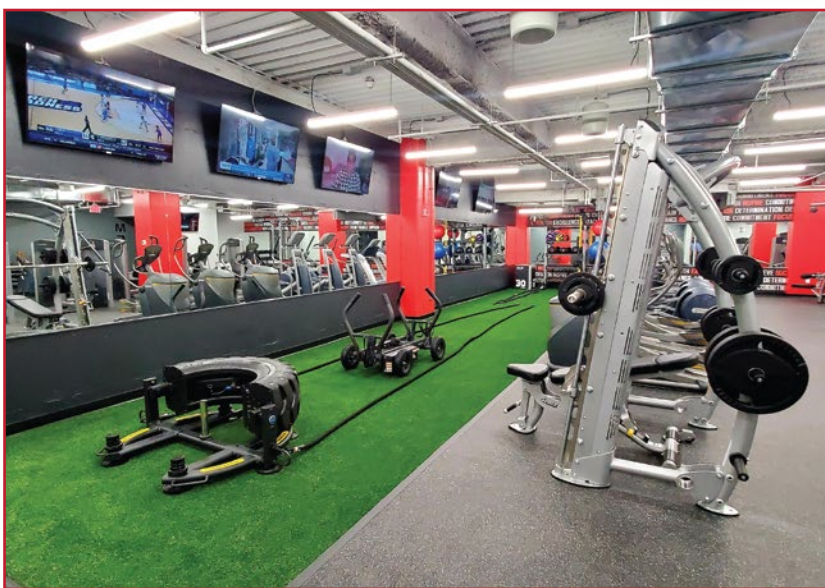
145 Huguenot Street, New Rochelle, New York



UNITS FROM 900 - 28,000 SQUARE FEET AVAILABLE

PROPERTY FEATURES

- Class "A" Office Building
- Additional Storage Units Available
- Newly Renovated Full Service Cafe
- Fully Equipped Fitness Center
- Immediate Access to I-95
- On-site Employee & Visitor Parking
- Located in New Rochelle CBD
- On-site Concierge, Building Manager & Engineers
- Walking Distance to Metro-North & Amtrak Train Station
- Minutes to Local Shopping, Dining & Newly Constructed Housing



GHP

Brendan Hickey
bhickey@ghpoffice.com

914.642.9300
ghpoffice.com

Rachel Greenspan
rgreenspan@ghpoffice.com

We Own. We Manage. We Lease.